

(Note: X1 2<sup>nd</sup> Gen will be called X1 for short in the below Instruction)

# X1 User Manual

(Applies to FW1.0 and later)



## Foreword:

Thank you for purchasing FiiO's X1, our 192 kHz/32bit high resolution lossless music player. To let you better utilize the X1 to enjoy high-quality music, we have prepared this complete user manual and collected and answered some frequently asked questions by users. We hope this manual will help you get to know the X1 and unleash its full potential.

# Table of Contents

<b>A. Introduction</b> .....	3
<b>B. Buttons and Ports</b> .....	3
1. Buttons/Ports Diagram .....	3
2. Buttons/Ports Introduced .....	4
<b>C. Visual Guide to Menu Operation</b> .....	6
1. Main Menu .....	6
2. Key Lock Settings .....	7
<b>D. Menu Operation</b> .....	8
1. Turning On/Off .....	8
2. Now Playing .....	8
3. Category .....	8
4. Browse Files.....	9
5. Play Settings.....	9
6. System Settings .....	10
<b>E. Firmware Updates</b> .....	14
<b>F. Usage Tips</b> .....	15
<b>G. Frequently Asked Questions</b> .....	16
1. About Charging .....	16
2. Transferring Songs.....	17
3. Firmware Updates.....	18
4. Storage .....	19
5. Music Playback .....	20
6. Other Operations .....	21
7. Connecting to other audio devices .....	22

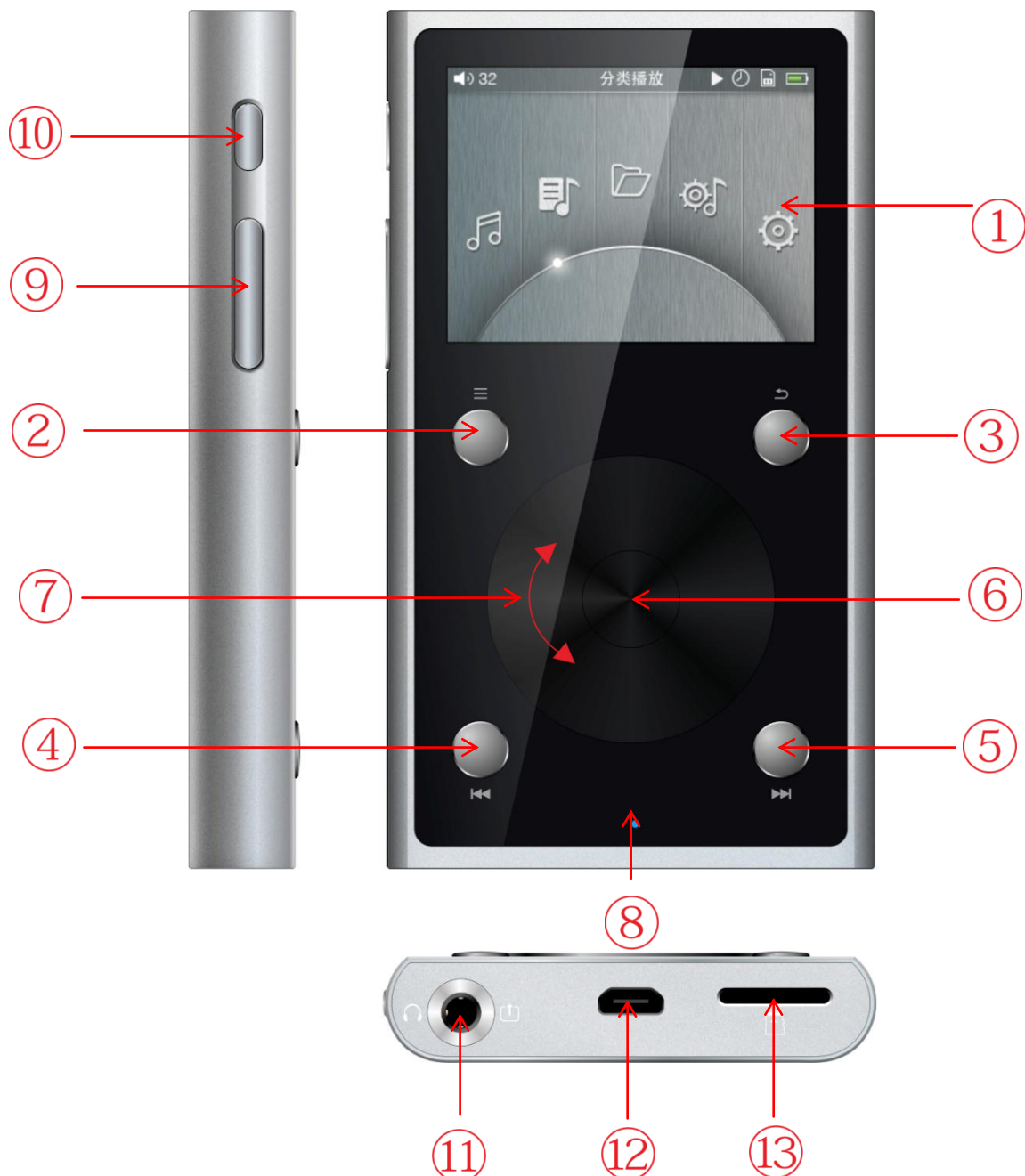
## A. Introduction

The X1 is a high resolution digital audio player, supporting lossy and lossless music formats including MP3, WAV, WMA, APE, FLAC, AAC and Ogg Vorbis. A maximum sample rate of 192 kHz/32 bit is supported and other features include In-vehicle Mode and CUE sheets. It's a portable high-performance music player.

The following sections are an illustrated guide to using the X1.

## B. Buttons and Ports

### 1. Buttons/Ports Diagram



## 2. Buttons and ports introduced

### 1) 262K Color TFT Display (320×240 resolution):

Displays the user interface and other information; for operating the unit in conjunction with buttons on the unit.

**2) Shortcuts Key:** The Shortcuts key will display different menu depending on which of the menus you are currently in as well as how long you press the key for. For instance, press briefly in the Now Playing menu to enable/disable the Shortcuts bar; press briefly in the Main menu to enter the Play setting menu; long press in a track/file list menu to enable the first-letter search function; long press in any menu except for a track/file list menu while playing music to enter the Now Playing menu.

**3) Back / main menu:** Press briefly to go back up one menu level each time until you reach the main menu; pressing Back while you're in the main menu when music is playing takes you to the "Now Playing" screen. Hold this button to return directly to the main menu.

**4) Up / Previous track / Rewind:** In "Now Playing" screen: press briefly to select the previous song for playback, hold down to rewind the current song; In menus: press briefly to choose the previous item (up) in menus.

**5) Down / Next track / Fast forward:** In "Now Playing" screen: press briefly to select the next song for playback, hold down to fast forward through the current song; In menus: press briefly to choose the next item (down) in menus.

### 6) OK/Play/Pause/Volume adjustment:

In "Now Playing" screen: press briefly to play / pause;

In menus: press briefly to enter the submenu of the selected item, adjust the level / value / choice of the selected item (using the scroll wheel for items with numerical value or many choices, or alternating between choices using the OK button directly for other items);

In other dialogs: press briefly to confirm actions (press other buttons to cancel);

Volume control: Hold down this button at any time to pop up the volume control dialog and adjust the volume using the scroll wheel.

**7) Scroll wheel:** Freely rotatable (360° rotation), turn the wheel clockwise to scroll down / right, choose the next item on the menu or adjust the level / value / choice etc. for the selected menu item; turn the wheel counter-clockwise to scroll up / left, choose the previous item on the menu or adjust the level / value / choice etc. for the selected menu item in the other direction

**8) Indicator light:** Blue while working, red while charging, green when fully charged.

**9) Volume "+" Volume "-":** Press briefly to change volume by one increment, hold down to change volume continuously until the maximum volume ("+"button) is reached or the player is muted ("-button)

**10) Power/Lock button:** When the unit is powered off, hold the button for two seconds and release it and the X1 will power on (after a brief pause); when the unit is on, press the button briefly to lock / unlock the player, or hold the button for three seconds to power off (hold for ten seconds for a forced shutdown).

**11) LO/PO Output:** The line out and headphone out share the same port. You can toggle which mode you want to use under the "Select output" option in the System Settings menu. The headphone out also supports the use of CTIA standard (e.g. most smartphones) in-line headsets. When using in-line controls, you can do the following:

**Volume Up/Down:** Briefly press the volume buttons to increase or decrease the volume by one step. Hold to continually increase/decrease the volume until maximum volume/mute is set.

**Play/Pause:** Press the middle button once to pause. Press again to resume playing.

**Skip to next track:** Quickly press the middle button twice.

**Skip to previous track:** Quickly press the middle button 3 times.

**Fast Forward:** Quickly press the middle button 2 times, holding down the last press. Release the button to resume playing.

**Rewind:** Quickly press the middle button 3 times, holding down the last press. Release the button to resume playing.

**12) Micro USB port (11 pin):**

For data exchanging, battery charging and connection to docking FiiO devices

13) Micro SD card slots:

Standard micro SD card slot, supporting micro SD cards up to 256GB

# C. Visual Guide to Menu Operation

## 1. Main Menu

### Buttons and Dials :

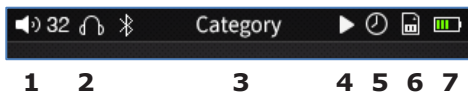
**Scroll Wheel:** Scrolls through menu items, changes values of selected items

**Enter / OK:** Enters next menu level, selects items, stores changes

**Shortcuts:** Shows/hides shortcuts Context menu

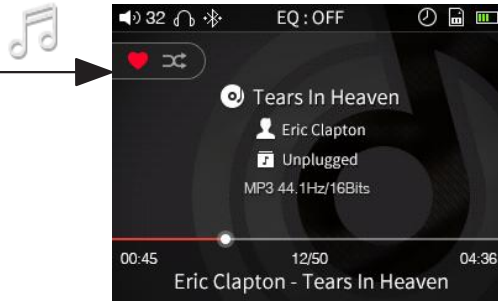
**Back :** Goes up one menu level

**Up / Prev | Down / Next :** Moves through menu items, changes values of selected items

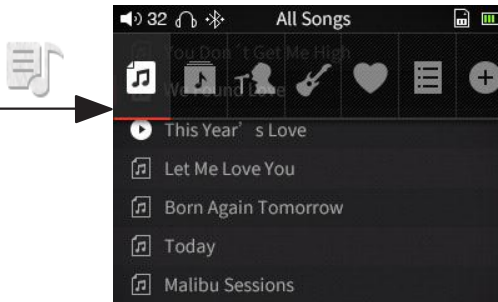


### Status Bar:

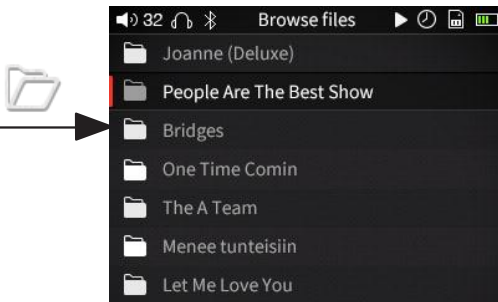
1. Current Volume
2. Current Output Mode
3. Current Menu/Display
4. Playing Indicator
5. Sleep timer Indicator
6. Micro SD Card Inserted
7. Battery Level Indicator



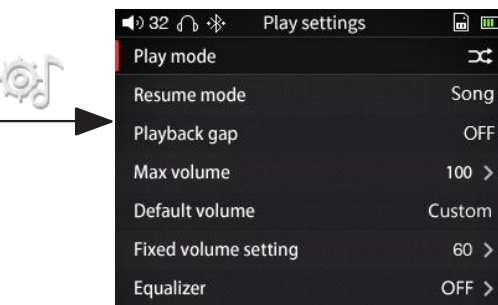
**Now Playing:**  
The shortcuts key shows/hides the shortcuts menu. Use the scroll wheel to navigate and the Enter key to select items in the shortcuts menu.



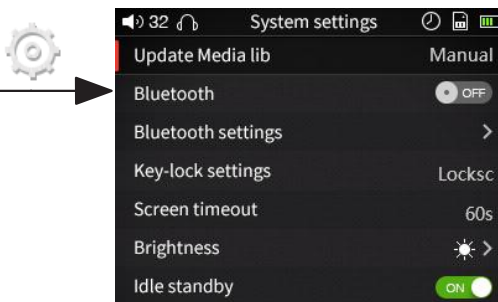
**Category:**  
After updating the media library, music files will be sorted into categories based on their tags. Scroll to choose between playing by song, album, artist, or genre. Favorites and playlists are added/deleted manually.



**Browse Files:**  
Displays all of the folder and sub-folders within your micro SD card, allowing you to browse through your music files. Navigate using the scroll wheel, Enter, and Back buttons.

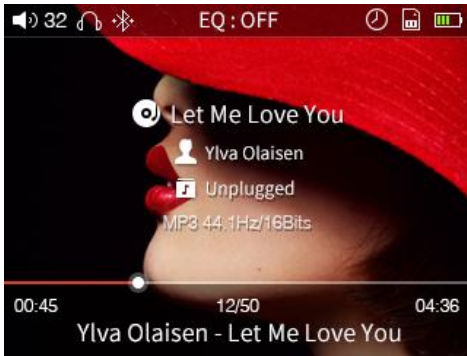


**Play Settings:**  
If an option does not have a submenu, adjust directly using the Enter or Previous/Next buttons. If an option does have a submenu, press Enter then adjust using the scroll wheel or Previous/Next buttons.

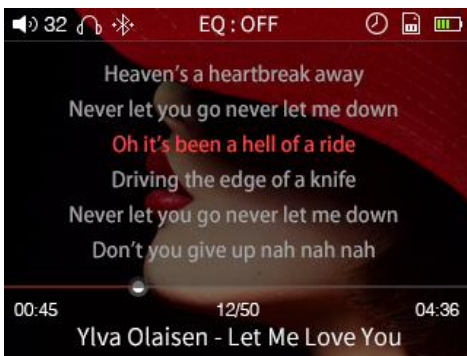


**System Settings:**  
If an option does not have a submenu, adjust directly using the Enter or Previous/Next buttons. If an option does have a submenu, press Enter and adjust using the scroll wheel or Previous/Next buttons.

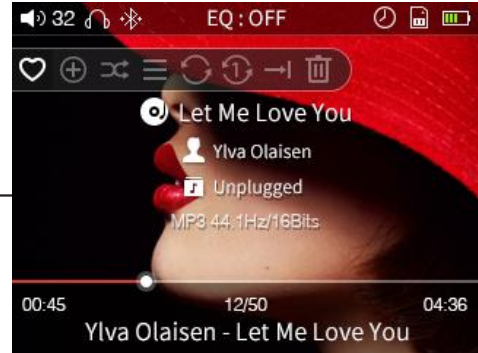
## Cover



## Lyrics



Briefly press the shortcut key



Use the scroll wheel or the "Previous" and "Next" buttons to switch between shortcuts

♥ Add/remove from favorites

⊕ Add to Playlist

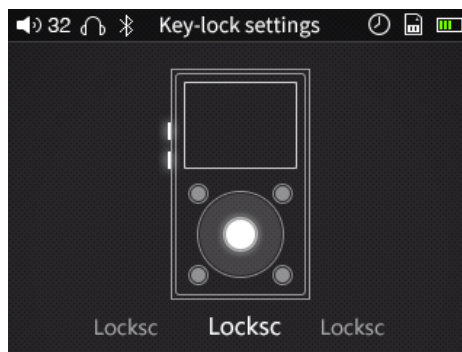
↺ ↻ ↻ ↻ → Select between loop all, loop single song, sequential, shuffle, and single play modes respectively

🗑 Deletes the current song

## 2. Key Lock Settings



Lockscreen 1: In lockscreen 1 mode, only the volume buttons are enabled when the screen is off. Short presses of the volume buttons change the volume, while long presses skip tracks (press volume up to skip to next, volume down to skip to previous).



Lockscreen 2: In lockscreen 2 mode, only the volume and Enter buttons are enabled when the screen is off. Short presses of the volume buttons change the volume, while long presses skip tracks. Pressing the Enter button will pause/resume playing the song.



Lockscreen 3: In lockscreen 3 mode, only the volume, Enter, and Previous and Next buttons are enabled when the screen is off. Short presses of the volume buttons change the volume, while long presses skip tracks. The Previous/Next buttons will also skip tracks. Pressing the Enter button will pause/resume playing the song.

## D. Menu Operation

### 1. Turning On/Off

When the X1 is powered off, press and hold the power button for 2 seconds to turn it on (you will see the language selection dialog the first time it is turned on). When the X1 is powered on, press and hold the power button to turn it off. After turning on, the X1 displays the main menu. Use the scroll wheel or Previous and Next buttons to choose between the five different options of the main menu – Now Playing, Category, Browse Files, Play Settings, and System Settings. Press the shortcut key while in the main menu to quickly jump to Play Settings.

### 2. Now Playing

When in the main menu, highlight Now Playing and press the Enter button to enter the Now Playing screen. If no song is playing, you will be presented with a list of songs to choose from – after selecting a song you will enter the Now Playing screen. While in the Now Playing Screen:

a) Press the Shortcuts key briefly to display the shortcuts context menu. Use the scroll wheel or Previous/Next buttons to navigate the context menu, and press the Enter button to apply the selected action – such as adding/removing favorites, creating and adding to playlists, switching play modes, and deleting files.

b) While playing a song, turn the scroll wheel to display a list of songs. Select a song using the scroll wheel, and press the Enter button to start playing the selected song.

Note: If you do not set the X1 to automatically update the media library, you need to do so manually in the System Settings menu.

### 3. Category

While in the main menu, select the Category icon and press the Enter button to get to this menu. From here, you can use the scroll wheel or Previous/Next buttons to select from sorting by: All Songs, Album, Artist, Genre, Favorite, Playlists, and Recently Added. Press the Enter key to go into any of these sub-menus, where you will be presented with a list of songs sorted by your chosen category. While in any sub-menu, pressing the Shortcuts key will allow you to quickly switch to the other types of sorting.

Favorites need to manually added/removed through the following methods:

(1) Individually add/remove favorite songs through the shortcut context menu in the Now Playing Screen.

(2) Batch add/remove favorite songs: To add/remove multiple favorite songs at a time, you first need to have at least one favorite song. After doing so, you will be able to enter the Favorites sub-menu. While here, press the Shortcuts key and select the "Add to Favorites" icon. You will be presented with a list of songs. Use the scroll wheel to highlight between different songs. Once you have highlighted a song, press the Next button to add it as a favorite or press the Previous button to remove it as a favorite. Once you have finished selecting



which songs to add/remove as favorites, press the Enter button to confirm changes.

The X1 supports both externally-created (M3U and M3U8 formats) playlists as well as natively-created playlists. To learn how to externally create playlists for the X1, please see the FiiO Support website at <http://fiiO.net/en/supports/41>. To directly create playlists from the X1, press the Shortcuts key while in the Now Playing Screen. Select the + icon in the context menu, which will then allow you to create new playlists or add tracks to an existing playlist. To delete a playlist, while in the playlist sub-menu press the Shortcuts button then the Enter button. To delete individual songs from playlists, while highlighting a song in a playlist press the Shortcuts button to bring up the confirm dialog then press the Previous button to select Yes, after that press the Enter button.

## 4. Browse Files

From the main menu, use the scroll wheel to highlight Browse Files and press Enter to go into the menu. If a micro SD card is not inserted, the message "SD Card Not Inserted..." will appear. If a micro SD card is inserted, you can browse through the folders and files on your micro SD card. Use the scroll wheel, Enter, and Back buttons to navigate through and select the music files to be played.

## 5. Play Settings

When in the Play Settings menu, use the scroll wheel to choose between the different settings items in the menu. Use the Enter and Previous/Next buttons to choose from the different options for each setting.

### a) Play Mode

Choose from the following playback modes: Shuffle, Sequential, Loop through all songs, Loop single song, and Single play.

### b) Resume Mode

Choose from 3 different options: Off, Song, or Position. In Song mode, when turned on again the X1 will resume playing at the beginning of the song being last played before being turned off. In Position mode, when turned on again the X1 will resume playing from the exact position of the last song being played before being turned off.

### c) Playback Gap

Choose from either none or the Fade in/Fade out options. With the Fade in/Fade out option, there is a fade effect when switching tracks. That is, when starting to play a new track the volume will start very low and gradually get louder, while at the end of a track the volume will gradually decrease until silence.

### d) Max Volume

After pressing Enter to get into this submenu, use the scroll wheel to set the maximum volume limit anywhere from 30 to 100. You cannot set the maximum volume to 0 to prevent there being no sound output after turning the X1 on.

### e) Default Volume and f) Fixed Volume Setting

For the Default Volume setting, choose between the Memory and Custom options. With memory, when turned on the X1 will be set at the volume that it was at before being turned off. With Custom, you can choose a particular

volume level to be set to when the X1 turns on in the Fixed Volume Setting option (press Enter on that option to enter the sub-menu to specify the desired volume with the scroll wheel). The Fixed Volume Setting is not available when Default Volume is set to Memory.

#### g) Equalizer

You can choose from a variety of preset EQ settings (Rock, Classical, Jazz, Pop, Dance, Vocal, and Metal) or define your own EQ (Custom). Each of these EQ settings may be modified. To modify any EQ, highlight the desired EQ and press Enter. Then use the scroll wheel to select which frequency you want to change, and press Enter. After doing so, use the scroll wheel again to change the frequency to your desire. Press the Enter button when finished. After repeating for all other frequencies that you want to change, press Back to save your changes to the EQ preset. Pressing the shortcut key at any time in this menu will display a prompt to reset the currently highlighted EQ to its default settings.

#### h) Line Out Mode

Choose from Fixed Level or Volume Adjustable. If Fixed Level is selected, you can adjust the Fixed Level option to 0dB, -3dB, and -6Db volume levels on the line out. If Volume Adjustable is selected, you can use the volume buttons to adjust the line-out volume (the Fixed Level option will not be available in this case).

#### i) Fixed Level

When Line Out Mode is set to Fixed Level, you can choose between the 0dB, -3dB, and -6dB volume levels here. If Line Out mode is set to Adjustable Volume, this option is not available.

(Note: Please be careful when the Line Out mode is set to fixed level and the output mode is set to Line Out. You will not be able to adjust the loud volume and you may damage your hearing if you plug in headphones when set to this mode.)

#### j) Balance

Press the Enter button to adjust channel balance. Use the scroll wheel to make the sound louder either through the left or right channels. There are 10 steps of adjustment for either direction, with the 10<sup>th</sup> step being about 5dB louder in that direction.

#### k) Play Through Folders

If this is set to On, the X1 will start playing tracks in the current folder. Once it has finished playing the last song in the current folder, it will begin to play the first song in the next folder. If there are any sub-folders within the folder, it will also play those before playing the next folder. If this is set to Off, only the tracks in the current folder will be played and the X1 will not play songs from other folders.

## 6. System Settings

When in the System Settings menu, use the scroll wheel to choose between the different settings items in the menu. Use the Enter and Previous/Next buttons to choose from the different options for each setting.

#### a) Update Media Library

Press enter, then choose between Automatic and Manual modes. In Manual mode, you must update the media library yourself after transferring new songs onto the X1 by pressing Enter on this option and selecting "Manual" in the sub-menu. In Automatic mode, the X1 will automatically update the media library database after being disconnected from a computer or after having inserted a new micro SD card.

When updating the media library, please do not press any buttons. Doing so will cause the media library update to fail. Pressing the back button during the media library update, however, will cancel the update. A prompt will come up after successfully updating the media library.

### b) Bluetooth and c) Bluetooth Settings

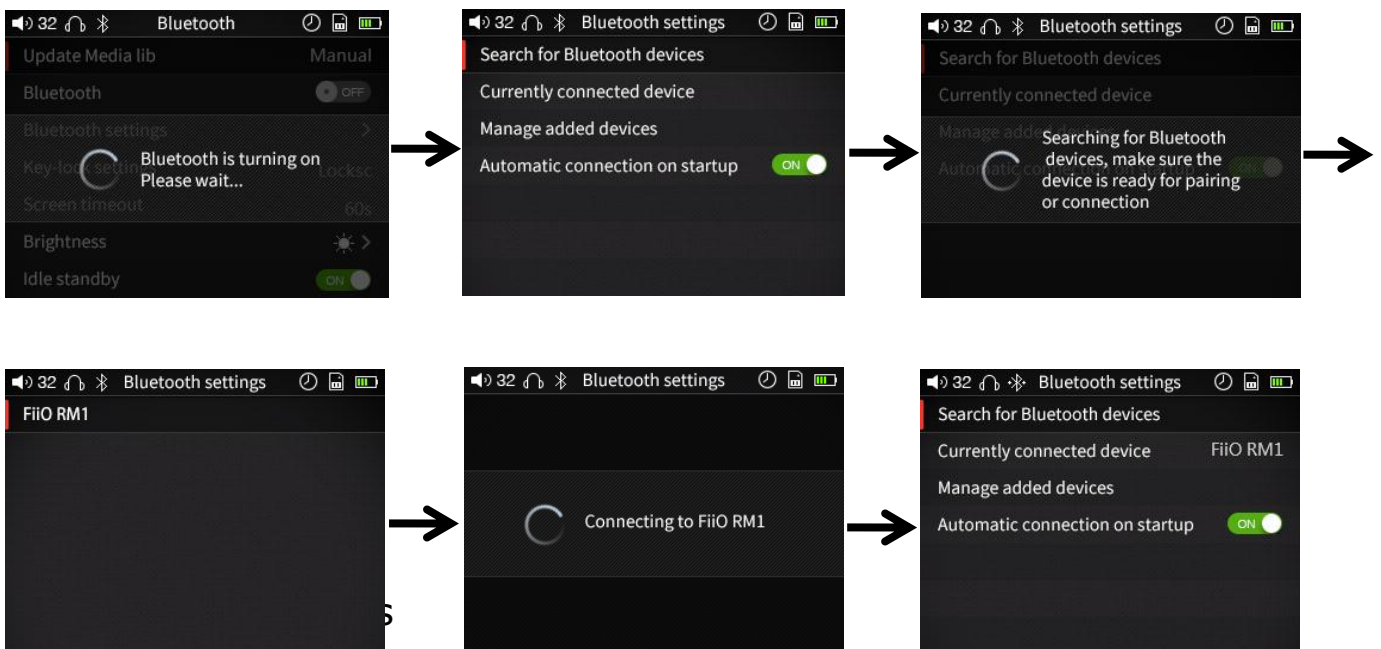
If this is set to OFF, Bluetooth will be disabled and the Bluetooth Settings sub-menu will not be available. If this is set to ON, Bluetooth will be enabled and the Bluetooth Setting sub-menu will be available. Press Enter after highlighting the Bluetooth Settings option to enter that sub-menu, where you will find the following settings:

**Search for Bluetooth Devices:** When this is selected, a prompt indicating the X1 is searching for Bluetooth devices will appear. Please put your Bluetooth device into pairing mode at this time. The X1 will then search for nearby Bluetooth devices and display a list of the devices it found. Select the device you want to connect to by highlighting and pressing Enter. If the X1 successfully connects, you will be taken back to the Bluetooth settings menu with your device showing up. If the connection is not successful, the prompt "Connection failed. Please try to reconnect" will appear. If no nearby Bluetooth devices are found, a prompt indicating that will show.

**Currently connected device:** Displays the currently connected Bluetooth device.

**Manage added devices:** You can connect to, disconnect from, switch between, and delete added Bluetooth devices.

**Automatic connection on startup:** You can choose the X1 to automatically pair or not automatically pair to your Bluetooth device when your player is turned on.



Press Enter to reach a sub-menu where you can choose from the Lockscreen 1, Lockscreen 2, and Lockscreen 3 modes. In Lockscreen 1 mode, when the screen is off only the volume buttons are active. In Lockscreen 2 mode, when the screen is off only the volume and Enter buttons are active. In Lockscreen 3 mode, when the screen is off only the volume, Enter, and Previous/Next key are active.

**Note: When the screen is off, short presses of the volume buttons change the volume, while long presses change the song/track.**

#### e) Screen Timeout

The X1's screen will be turned off and its buttons disabled (according to the key lock option) if the buttons have not been touched after the period of time specified here. You can choose between 30, 40, 50, 60, 90, and 120 seconds as well as ON (the screen and buttons are never turned off). Press the Enter key to enter this sub-menu and use the scroll wheel to adjust this setting.

#### f) Brightness

Press Enter to enter this sub-menu. Use the scroll wheel and Enter button to choose from 10 different levels of brightness.

#### g) Idle Standby and h) Idle Standby Timer

If ON is selected for the Idle Standby setting, then the player will automatically turn itself off if it has not been playing music and has not been touched after a set amount of time. To change this set amount of time, highlight the Idle Standby Timer option and press Enter to reach a sub-menu where you can choose from 1 minute to 8 minutes.

If OFF is selected, this power-saving feature is disabled and the Idle Standby Timer setting cannot be changed.

#### i) Sleep and j) Sleep Timer

If this is turned ON, the player will automatically go into deep sleep after a set amount of time of playing music with no user operation. Adjust the set amount of time by highlighting the Sleep Timer option and press Enter to reach a sub-menu where you can choose from 10 minutes to 120 minutes. After turning this option on and setting a Sleep Timer, a small clock icon will appear in the top status bar.

**Note: The Sleep Timer takes effect only once. After it has been triggered, the Sleep Timer will be turned off upon turning on the X1 again.**

#### k) Select Output

This option changes the output mode of the bottom-facing headphone jack. Choose between Line Out (arrow symbol) and Headphone Out (headphone symbol) modes. Line Out mode is used to connect the X1 to external amplifiers, while the Headphone Out mode is suitable for driving headphones. Music must not be playing at the moment to change this setting.

#### l) USB Mode

Press the Enter button on this option to toggle between the Storage or In-Vehicle modes. When Storage mode is selected, the X1 acts as a USB storage when hooked up to a computer and data transfer is possible. If the In-Vehicle Mode is selected, when the X1 is hooked up to a 5V car charger via a USB cable

the X1 will turn on automatically when the car starts. If the Resume Mode is set to either Song or Position, the X1 will also automatically start playing from the last song or position, depending on the exact Resume Mode setting. Once the car is shut off and the car charger stops supplying power, the X1 will commence counting down to turning off. If no action is taken during this countdown, the X1 will automatically shut off.

#### m) USB Charge

This option has two possible settings: ON or OFF. When USB Mode is set to storage, this option is set to ON and cannot be changed. When USB Mode is set to In-Vehicle, this option can be changed to OFF or ON. When this option is set to OFF, the power being supplied through USB will directly power the player instead of charging the battery, which extends the battery's life. The bottom status LED will change to light blue when connected to USB in this mode.

#### n) Theme

Press the Enter button to reach the Theme sub-menu where you can choose from between 6 different themes by using the scroll wheel.

#### o) Supports In-line Headphone Control

Either turn ON or OFF in-line controls on the X1. When set to ON, you can play, pause, and change tracks using a CTIA standard headset. When set to off, in-line controls are disabled.

#### p) File Name Display

Press Enter when highlighting this option to choose from displaying the song's File Name or the song Title at the bottom of the Now Playing screen.

#### q) Cover Display

This option can be switched between the OFF, Normal, and Full Screen modes. In OFF mode, the song's album art is not displayed in the Now Playing screen. In Full Screen mode, the status and playback bars are hidden and only the cover is shown in the Now Playing screen.

#### r) Lyrics Display

This can be set to OFF or ON. When set to ON, lyrics will be shown in the Now Playing screen if the lyrics file is found.

#### s) Scroll Wheel Prompt Tone

This can be set to either OFF or ON. If set to ON, the scroll wheel will produce sounds when turned. If set to OFF, the scroll wheel is silent when turned.

#### p) Reset Media Library

Press Enter to reset the media library database, which stores information on classifying songs that is used for the Category sub-menus. Resetting the media library database will not delete anything from the micro SD card.

#### t) About X1

Press Enter to view the player's model name, serial number, NB code, the currently inserted micro SD card's total and available capacity, and the total number of songs. You can also use the scroll wheel or Previous/Next buttons to view a quick start guide as well as copyright information.

#### u) Language

This player supports multiple languages – Simplified Chinese, Traditional Chinese, English, Japanese, Korean, French, German, Spanish, Thai, and

Russian. Press Enter to access this sub-menu, use the scroll wheel to highlight the desired language, and press Enter to confirm.

#### v) Font Size

Choose between displaying large (Big) or small font in the menus.

#### w) Storage Formatting

If this option is chosen when a micro SD card is inserted, a prompt will appear asking to confirm to delete the contents of the micro SD card. After formatting, all files in the micro SD card will be deleted, and the micro SD card will be formatted into the FAT32 format. Please back up the desired files before choosing this option.

#### x) Factory Restore

If the unit fails to work properly or you need to just restore the factory default settings, pressing Enter here will restore all settings to their defaults.

## E. Firmware update

Firmware update may update the player with new features and optimize the playback experience; not upgrading to the latest firmware does not affect current operation of the unit. The unit supports firmware upgrades via update files loaded into micro SD cards. Improper operation during firmware updates may cause the unit to malfunction! Please read the following instructions for firmware updates carefully before proceeding.

To check the current firmware version:

From the main menu, navigate to System Settings->About X1 to see the current firmware version loaded on your X1.

Preparations / Precautions before firmware update:

- A micro SD card formatted in FAT32 is required for firmware updates. This may be obtained by formatting a card using the X1's built in formatting function (System settings ->Storage formatting).

CAUTION: all data and music on a card will be erased by formatting.

- A firmware update should not affect data on the micro SD card (other than any formatting required, see above). Nevertheless, please back up any important data on your card to protect against accidents.

- Make sure the X1 is adequately charged (preferably fully charged) for the update process to prevent power failure during the update;

- Do not operate other buttons and dials on the player during the update process.

- If the update process fails, hold the power button for 10 seconds for a forced shutdown and turn the player on in update mode again to resume the update.

Summary of procedure for upgrading firmware using micro SD card:

- 1.Copy the X1II.fw file provided by FiiO into the root directory of a micro SD card in FAT32 format;
- 2.Turn off the X1 and insert the card into X1's micro SD card (if not already inserted);

3. Hold the power button while holding the Shortcuts key (upper left key of the X keygroup) to turn on the X1 in firmware update mode. The following firmware update dialogs will appear and after the update is complete, the player will restart automatically.

Firmware update in progress



Update successful



After the update process is complete, please delete the X1II.fw file from the micro SD card and update the media library (System settings->Update Media Lib).

In case of firmware update failure:

- If "update file not found" is shown, please check to make sure that the micro SD card is formatted in FAT32 and that the X1II.fw file within the firmware update package was extracted and placed in the root directory of the card (e.g. by dragging the file directly onto the drive icon of the card on your computer).
- Otherwise, if the update process fails and error messages are shown, please hold the power button for 10 seconds for a forced shutdown and turn the player on in update mode again to resume the update.
- If the update process fails repeatedly, please try putting the X1II.fw file in a micro SD card of 32GB or under, formatted using the X1's built in formatting function (System settings->Format). CAUTION: all data and music on a card will be erased by formatting.

## F. Tips on usage

This section contains some useful tips for you to get the most out of your X1.

### 1. How to update the media library quickly

It is recommended to set System Settings->Update Media Lib to Auto, so that the X1 will update the media library automatically each time after you connect it to the PC or insert/remove a micro SD card.

### 2. How to play your favorite songs quickly

When in the Category sub-menus or when browsing files, hold the Shortcuts key to search by the first letter of the song/file to quickly jump to the song you want to hear. Go to the Favorites menu to add a batch of your favorite songs (or favorite individual songs as they are played in the Now Playing screen) and then enter the favorites menu to enjoy all your favorite songs. The X1 supports

addition and removal of songs defined in .cue files to favorites as well for your enjoyment of lossless rips of CDs/DVDs/etc.

3. How to cut over to the song you want to listen to and adjust volume quickly  
Turn the scroll wheel in the Now Playing screen to pop up a list of songs before and after the current playing song. Turn the scroll wheel to choose between songs, press OK to select and start playing the new song.  
Hold the Play button and Volume adjustment dialogue pops up, then use the wheel to adjust volume.

4. If you have something to attend to while listening, how do you leave the X1 on while saving power, so that you can later continue listening where you left off?

If you are listening to music as you fall asleep at night, you can set a sleep timer so that the X1 automatically enters deep sleep after a certain amount of time of playing music and not being operated. (Note: The sleep timer is reset and turned off after being triggered once.)

If something suddenly comes up and you cannot listen to music, by default the Idle Standby option is turned on so that after a set amount of time, music playback stops, which saves battery power.

## G. Frequently Asked Questions

### 1. About charging

**Q: What power sources may be used to charge the X1?**

A: The X1 may be charged by any USB charger with 5V output voltage like computer, power bank, and adapter. It's recommended to use the 5V/2A charger.

**Q: What is the charging current of the X1 while charging?**

A: Approximate 460mA through a computer USB port or approximate 1.2A through a dedicated USB charger as recommended (DC 5V 2A).

**Q: How long does it take to charge up the X1?**

A: A full charge through a dedicated USB charger as recommended (DC 5V, 2A) takes about 3 hours

**Q: Can the X1 be charged by a power bank?**

A: Yes, as long as the current is higher than 1A.

**Q: Can the X1 play songs while charging?**

A: Yes; no harm will come to the X1 if you use it while charging, in which case it is normal for the X1 to get warm. The reason we recommend turning the X1 off for charging is so that charging completes more quickly.



**Q: What to do if the X1 gets a little hot when playing songs while charging?**

A: It is normal for the X1 to get a bit hot in these conditions and this does not endanger the X1 or the listener in any way. If you are worried about this, it is better to take off any casing to expose the X1 to air for cooling down. If you're still worried, turn down the volume on the X1 or turn off the player for charging.

**Q: Can the X1 be connected to chargers via other micro USB cables?**

A: Yes, but the micro USB cable that comes with the X1 is specially constructed with thick power line conductors to minimize power loss while charging. Using other micro USB cables may lead to slower charging; very poor quality USB cables may cause so much power loss through the cable as to fail to charge the X1 altogether.

**Q: Why does the X1 charge so slowly or not at all through a front USB port on a desktop computer?**

A: The front USB ports on a desktop computer are connected to the motherboard through long thin cables, which cause too much voltage drop when connected to high current draw equipment like the X1.

**Q: Why does the battery capacity indication not accurate?**

Because X1 will judge the battery capacity by the voltage of the battery, so it's not very accurate. Also the battery voltage might differ while playing music. Therefore, the battery capacity indication is for reference only.

**Q: How to judge the X1's charging status?**

A: On the bottom of the front panel, there is a charging indicator LED, which lights up red while charging and green when fully charged. The battery level of the onscreen battery gauge (on the upper right corner while the player is on, or taking up the whole screen if the player is off) moves to indicate battery charging.

**Q: How to tell whether the X1 is fully charged or not?**

A: When X1 gets fully charged, the status indicator LED on the power button lights up green and the onscreen battery gauge (on the upper right corner while the player is on, or taking up the whole screen if the player is off) stops moving and holds steady at full.

**2. Transferring songs****Q: What operating systems does the X1 support (for transferring songs)?**

A: It supports 32bit and 64bit Windows XP, Windows 7 and above, as well as

Mac OS 9, X, and most versions of Linux and Unix.

**Q: What USB ports are the X1 compatible with?**

A: The X1 is compatible with USB 2.0 (and all later standards that are backwards compatible with 2.0, including 3.0 and 3.1).

**Q: How quickly does the X1 transfer songs?**

A: This is dependent on the size of files / songs transferred and the Class of the micro SD card; average read / write speeds are about 5MB/s.

**Q: Why does it transfer so slowly through a front USB port on a desktop computer?**

A: The front USB ports on a desktop computer are connected to the motherboard through long thin cables, which may degrade the signal quality and hence reduce the speed of transfers; it is recommended to connect to a rear USB port on a desktop computer to transfer data.

**Q: Does the X1 support deleting or copying files by dragging through the computer's File Manager?**

A: Yes.

**Q: Is a driver required for connecting the X1 to computer?**

A: No driver is required for connecting the X1 to a computer for file transfers.

**Q: Does the X1 support Linux?**

A: Theoretically it is supported (as a generic mass storage device), but we cannot guarantee support through actual testing of all the various OSes out there.

### 3. Firmware upgrades

**Q: How to know what firmware version is on my X1 and what is the newest version?**

A: The current firmware version can be viewed via System Settings->About X1.

All firmware versions for the X1 may be downloaded via

<http://fiiO.net/en/supports/41>.

More ways to keep updated with the latest firmware versions of X1:

1. Facebook: [www.facebook.com/FiiOAUDIO](http://www.facebook.com/FiiOAUDIO)
2. Official website: [www.fiiO.net](http://www.fiiO.net)
3. Forum: <http://www.head-fi.org/forum/list/180/>  
<http://fiiO.me/forum.php>
4. Email us at [support@fiiO.net](mailto:support@fiiO.net)

**Q: How to update the X1 firmware?**

A: Please refer to Section C. Firmware Update in this user manual.

**Q: Is it possible to brick the X1 while upgrading the firmware? What to do if my X1 is bricked?**

A: It should not be possible to brick the X1 in the normal course of upgrading its firmware. If you somehow manage to brick

**4. Storage****Q: What cards does the X1 support?**

A: The X1 supports TF cards (also known as micro SD cards), including SDHC and SDXC.

**Q: Is the X1 picky about cards?**

A: The X1 has been tested to support major brands such as Sandisk and Kingston very well. It is beyond our ability to test every other brand out there, but any genuine card from a reputable brand should work with the X1. To prevent slow card speeds causing the X1 to stall while playing or be unable to play high bitrate lossless tracks (such as 192k/24bit APE files or DSD files), please use micro SD cards of Class 6 or above.

**Q: What size of cards does the X1 support?**

A: The X1 is currently tested to support micro SD cards up to 128GB. It is recommended to format the card in FAT32 format.

**Q: How to format the micro SD card into FAT32 format?**

A:

1. Simply insert the card into the micro SD card slot in the X1, go to System Settings->Storage formatting, press OK to select and OK again to confirm formatting the card to FAT32 format. or
2. Insert the micro SD card to a card reader to connect to your computer, right-click on the micro SD card shown and choose "Format.." and follow the prompts to format the card to FAT32 format. But please do not choose 64K under the Allocation unit size when formatting the micro SD card. Also, Micro SD cards in 64G or 128G sizes cannot be formatted into FAT32 by the windows system, please try to use third party tool (such as Guiformat or smdk\_fat32) to format.

Warning: all data and existing songs on the card will be deleted, please make backups on your computer first as necessary.

**Q: Nothing from the micro SD card shows on the X1?**

A:

1. Play by Category will not show any songs from a card unless and until a media library update has been performed. Go to System Settings->Update Media Lib, press OK and select "Manual" to perform a manual media library update.

Or use Browse Files to confirm that the files on your card are recognized by the X1.

2. If neither of the above works to show you the songs on your card:

- i. Go to System Settings->About X1 and check that the Available Capacity of the micro SD card you inserted is shown correctly (comparing it to the info shown on your computer); if not, try formatting the card using the X1 (this deletes all files on the card; please back up your data and music first) and putting your files back on the card;
- ii. If this does not help, you may try formatting the card into NTFS format using Windows;
- iii. If none of the above helps, it is recommended that you try another card with the X1.

**Q: Some songs on the micro SD card don't show on the X1?**

A:

1. Have you performed a media library update after you last loaded songs onto the card? Go to System Settings->Update Media Lib, press OK and select "Manual" to perform a manual media library update.
2. If songs are still missing in "Play by category" (while they all appear in Browse files), try to reset the media library (System settings->Reset media library) then update the X1 to the latest firmware.
3. After updating to the latest firmware, try updating the media library again.

## 5. Music playback

**Q: Why does my .wav files not play?**

A: Please check using Foobar2000 or other capable software on the computer to see whether the wave file is actually DTS or Dolby encoded multichannel audio, or perhaps a wave file of bit depth over 32 bits (8bit below and 32Above bit files are not always supported).

**Q: Why does my .ape files not play?**

A: APE comes in 5 levels of compression, including Fast, Normal, High, Extra High and Insane.

Extra High and Insane encoded APEs are not supported while Normal and High encoded APEs are only supported at 96k/24bit or below.

**Q: Does the X1 support cue sheets?**

A: The X1 supports external cue sheets for identifying and playing a cue'd music file as separate tracks.

**Q: Why is my cue sheet not supported?**

A: Embedded cue sheets are not supported. Also please make sure that the .cue file is named the same as the music file that it cues and they are put under the same directory.

**Q: Why does X1 not show the cue file in the micro SD card when browsing files?**

A: Since it has been already been used by the X1 to split the cue'd file into multiple tracks (which are shown).

**Q: How do you set it to shuffle play across different folders?**

A: Set the play mode to shuffle. Then after updating the media library, enter the All Songs list in the Category menu and choose any song to start playing.

**Q: Why do my lyrics not show?**

A: The X1 only supports external .lrc files, named after the music file it lyricizes.

**Q: Why am I seeing rubbish characters?**

A: Only ANSI, Unicode and UTF-8 (with and without BOM) encodings are supported for ID3 tags and .lrc files to be read by the X1. If the ID3 tags and / or lyrics files are encoded in an unsupported format, rubbish characters will be shown.

**Q: Why do my new songs not appear under any category?**

A: The X1 can only sort your new songs into these categories after they have been added into the media library database. Please set the Update Media Library setting to automatic, or manually update the media library after adding your new songs.

**Q: Why does the total number of files displayed by X1 differ from the actual number of files that I copied into the micro SD card?**

A: The total number displayed by the X1 indicates the total number of files playable by the X1.

**6. Other Operations****Q: How to get longer battery life for the X1?**

A:

1. Turn on "Idle standby". When this is set to on, the player will enter standby after the set time when no music is playing and the user does not press any buttons on the player.
2. Lower the backlight brightness to reduce power consumption.
3. Set the "Screen timeout" timer, so that the player turns off the screen and locks the keys automatically after the set delay when no buttons have been pressed and the scroll wheel hasn't been turned.

**Q: Why is the X1 sometimes sluggish in responding?**

A:

1. High bitrate lossless tracks, particularly 192k/24bit APEs or DSD files, take more hardware resources to decode, possibly causing slowdowns in the player UI. You may convert such APEs to FLACs or uncompressed WAVs using programs such as foobar2000 on the computer first to make it easier on the player. The sound quality will be the same.
2. Placing too many songs on the X1 may also contribute to slowdowns. Please limit the number of songs on the X1's micro SD card where possible.
3. Placing non-music related files on X1's micro SD cards, such as videos and pictures, may cause the X1 to slow down while sifting through them looking for music files. It is recommended to dedicate the micro SD card on the X1 to music.
4. Playing high bitrate files or DSD files from slow micro SD card may cause stuttering. Class 6 or above genuine micro SD cards are recommended.
5. Unpredictable ordering of files, such as placing several .ape and .cue files in the same directory. The following directory structure is recommended: create separate folders for albums by the same artist, and open subfolders within each artist folder to hold single albums in separate subfolders.
6. A mixture of music files of several different codecs and sample rates may also slow down the player. It is recommended to place files of different codecs and sample rates into separate folders and to play files of the same type in sequence from these folders, to prevent the X1 from having to switch between different decoders frequently.

**Q: Why does the X1 get a bit hot in operation?**

A: The X1 utilizes an SoC with high clock speed, a separate DAC, and (also separately) a high power headphone amplifier and independent analog volume control in the amplification stage, thus dissipating way more power than consumer DAPs typically performing computation, DAC and amplification all on the SoC. Apart from outputting more power to your headphones, a lot of this power is also dissipated as heat, thus causing the X1 to heat up slightly in operation; but this does not endanger the X1 or the listener in any way.

**7. Connecting To Other Audio Devices****Q: How do you connect the X1's line output (LO) to other audio devices?**

A: The X1's LO is a standard line out that is designed to be connected to external headphone amplifiers, car audio systems, home theater systems, powered speakers, etc. The LO provides sound at a very high volume when either set to a fixed-level output or at the higher levels of the adjustable output option, which can damage your hearing if you listen to headphones in this output mode. Please set the output mode to Headphone output before listening to headphones with the X1.